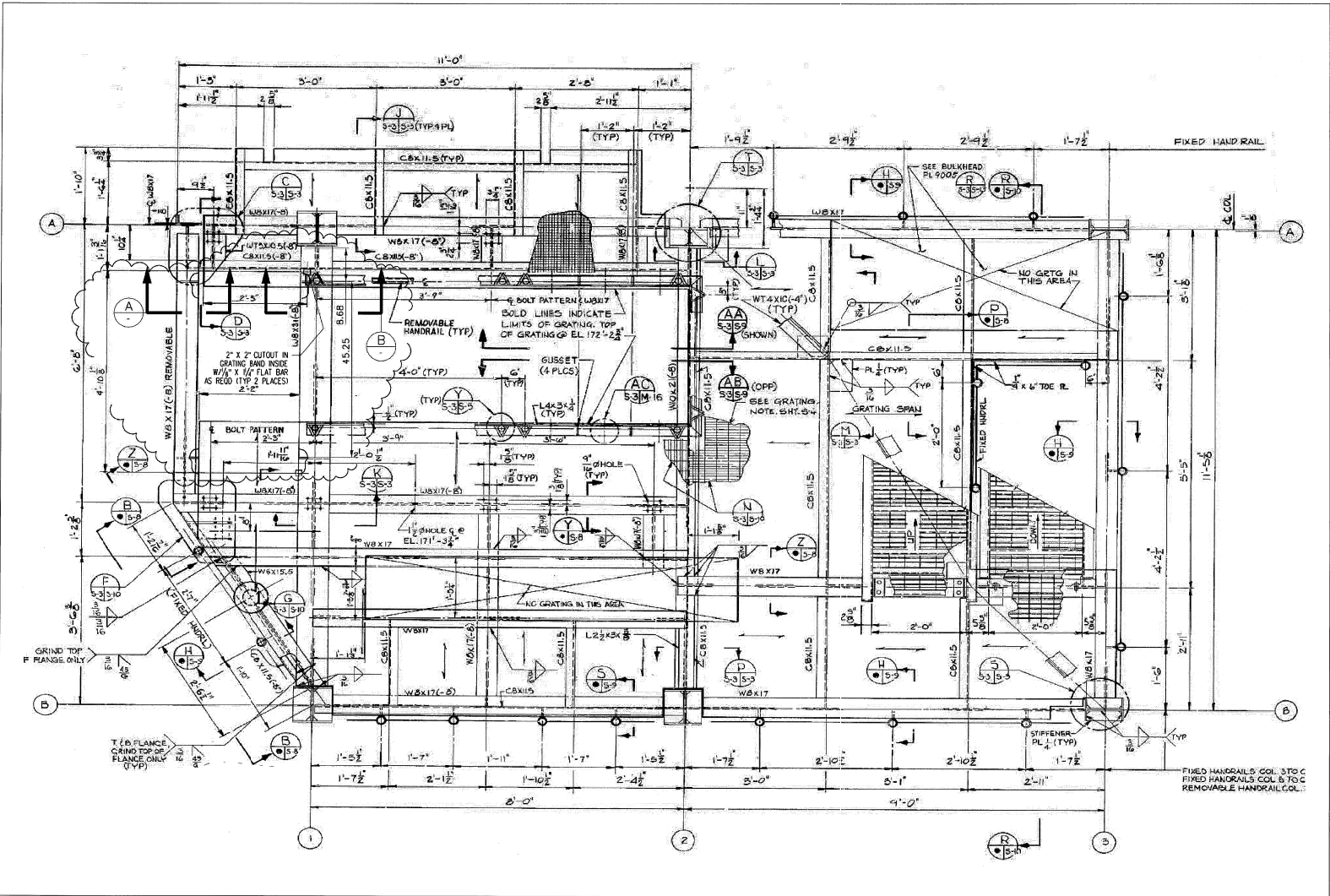
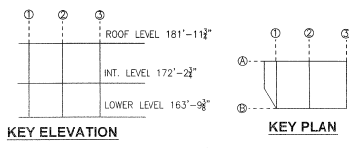


NOTICE: When Government drawings, specifications, or other data are used for any purpose other than in connection with a definite contract Government procurement operation, the United States Government thereby incurs no responsibility or obligation whatsoever, and the fact that the Government may have furnished, furnished, or in any way supplied the said drawings, specifications or other data is not to be regarded as an implication or admission on its part that the holder or user of such drawings, specifications or other data is not to be regarded as a manufacturer, user, or seller of any patented process, machine, or article of manufacture, or as infringing any patent right, or as being in any way liable therefor.



OMBU EL 172-2 3/4" PLAN
 NTS - SOURCE FILE 79K0836 SHEET 53



SYM	ZONE	DESCRIPTION	DATE	APPROVED
REVISIONS				
THIS DRAWING CREATED IN AUTOCAD 2007 FILE FORMAT AND WILL BE REVISED ONLY ON AN AUTOCAD SYSTEM. FILE: 14005006-568.DWG				

JONES EDMUNDS
 730 NE WALDO ROAD, GAINESVILLE, FLORIDA 32641 / (352) 377-5851
 1910 S WASHINGTON AVE, SUITE 210, TALLAHASSEE, FLORIDA 32304 / (904) 299-2950

SIGNATURES	DATE	NATIONAL AERONAUTICS AND SPACE ADMINISTRATION
DRAWN S. HAFERKAMP	06/24/09	JOHN F. KENNEDY SPACE CENTER, NASA KENNEDY SPACE CENTER, FLORIDA
CHECKED S. BHIDE	06/24/09	LAUNCH COMPLEX 39B, DEMOLITION OF FSS/ISS AT LAUNCH COMPLEX 39B, DEMOLITION PACKAGE
DESIGNED N. PONTILLO	06/24/08	OMBUU INTERMEDIATE LEVEL PLAN
APPROVED [Signature]	06/24/09	

S68	DATE 06/24/09	SIZE F	DWG. NO. 222W2200001	REV
TITLE	PROJ. NO. 98580	SHEET 83		